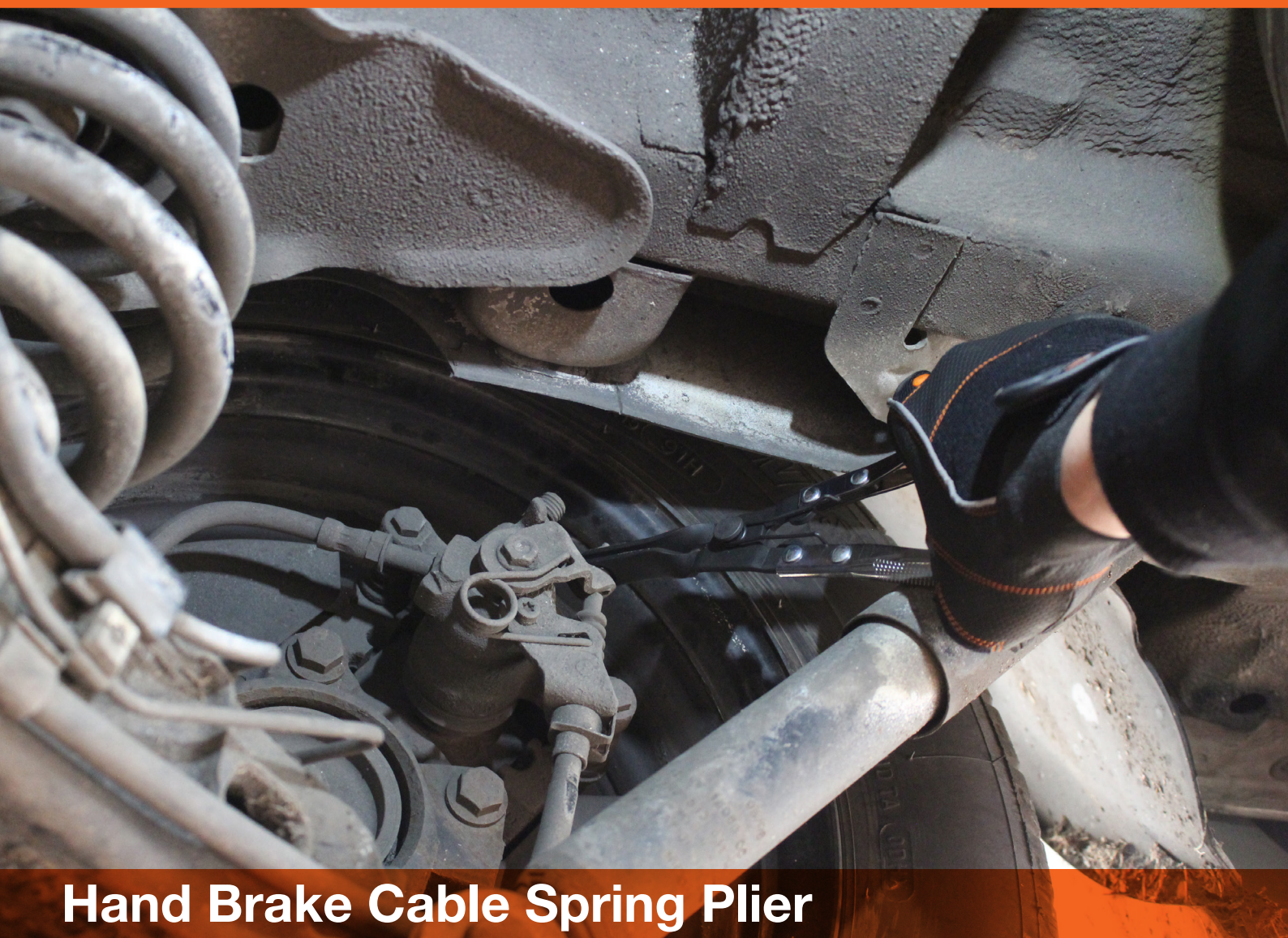


BBR204

**BAHCO®**



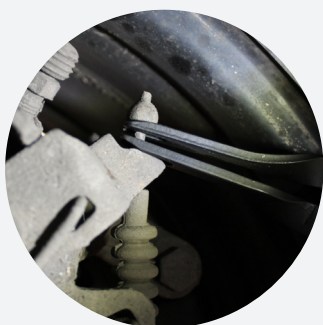
**Hand Brake Cable Spring Plier**



# BBR204

## HAND BRAKE CABLE SPRING PLIER

1. This tool allows quick and easy assembly and disassembly of the hand brake cable by compressing the retaining spring
2. Special tips for easy hook-up of hand-brake cable retaining spring
3. Time saver tool
4. Opening width: 21,9 mm
5. Suitable for a wide range of vehicles, such as VAG Group, BMW, PSA Group, Nissan, Renault, etc.
6. Knurled grip metallic handles
7. High performance alloyed steel



1.



2,4



6.



BS56

**BAHCO®**



**Tie Rod End Socket**



# BS56

## TIE ROD END SOCKET

1. Use this tool to extract the tie rod end
2. After disassembling the ball joint from the steering knuckle, put this tool over the tie rod end and remove it
3. Suitable for a wide range of vehicles, such as standard passenger cars and some light commercials
4. Slot size: 34mm x 18.5mm. Internal diameter 49mm x 57.5mm deep
5. Time saver tool
6. Easy use, and especially useful when the tie rod is stuck
7. 1/2" Drive
8. High performance alloyed steel



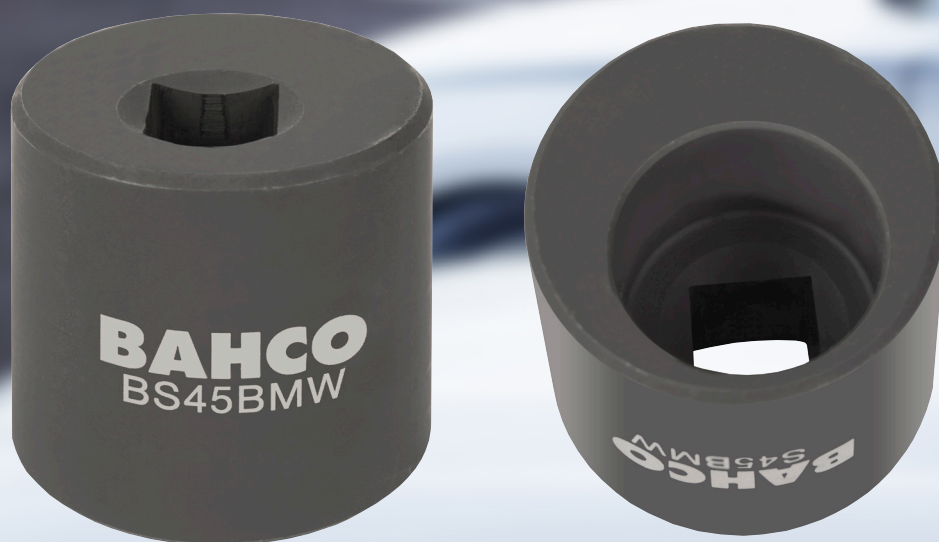
2





BS45BMW

**BAHCO®**



**BMW Rear Wishbone Eccentric Socket**



# BS45BMW

## BMW REAR WISHBONE ECCENTRIC SOCKET

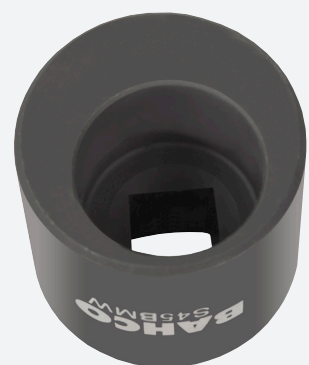
1. Wishbone eccentric socket for adjusting the camber on the rear axle
2. This tool is placed on the wishbone fastening screw. By turning the socket, the wishbone is adjusted to the correct camber setting
3. This tool helps solving a very common issue on these BMW models
4. This will result in precise handling and even tyre wear
5. Suitable for BMW vehicles; E36, E46, E83 and E85
  - E36 - Third generation of the **BMW 3 Series** – 1990/2000
  - E46 – Fourth generation of the **BMW 3 Series** – 1997/2006
  - E83 – First generation of the **BMW X3 Series** – 2003/2010
  - E85 - First generation of **BMW Z4 Series** (roadsters and coupés) – 2002/2008
6. 1/2" drive
7. High performance alloyed steel



2.



2.





BS40VAG

**BAHCO®**



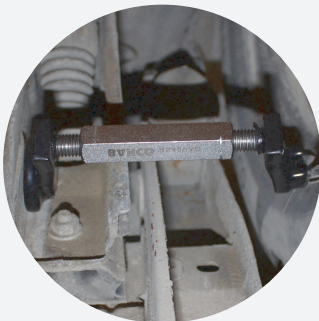
**VAG Front Camber Adjustment Tool**



# BS40VAG

## VAG FRONT CAMBER ADJUSTMENT TOOL

1. Adjusts the camber by placing the tool between the rim and the body
2. By turning the hexagonal body, it increases or decreases the spacing, therefore regulates the camber
3. Suitable for the VAG Group vehicles
4. One-man operation tool
5. Time saver tool
6. External drive hexagonal socket 22 mm and 85 mm length
7. High performance alloyed steel



**1,2.**



BE6810Z

**BAHCO®**



**Z Type Carter Wrench**



# BE6810Z

## Z TYPE CARTER WRENCH

1. Used for removing oil drain plugs
2. Special “Z” shape for unbeatable comfortability and performance
3. 8 mm square male
4. 10 female bi-hexagonal
5. Hardness: 52-54 HRC
6. High performance alloyed steel
7. Length: 280 mm
8. Nickel and chrome plated matt finish

**3.****4.**



BE301CM

**BAHCO®**



**Centering Mandrels Set for Clutches**



# BE301CM

## CENTERING MANDRELS SET FOR CLUTCHES

1. For easy and quick assembling single-disc dry clutches
2. By turning the screw, this tool perfectly adapts itself to the hub diameter
3. Suitable for vehicles with hub diameter from 15,0 to 26,6 mm
4. Time saver
5. Also available individually
  - BE301CM-01 – Diameter range. 15/19 mm
  - BE301CM-02 – Diameter range. 20/26,6 mm
6. High performance alloyed steel and aluminium

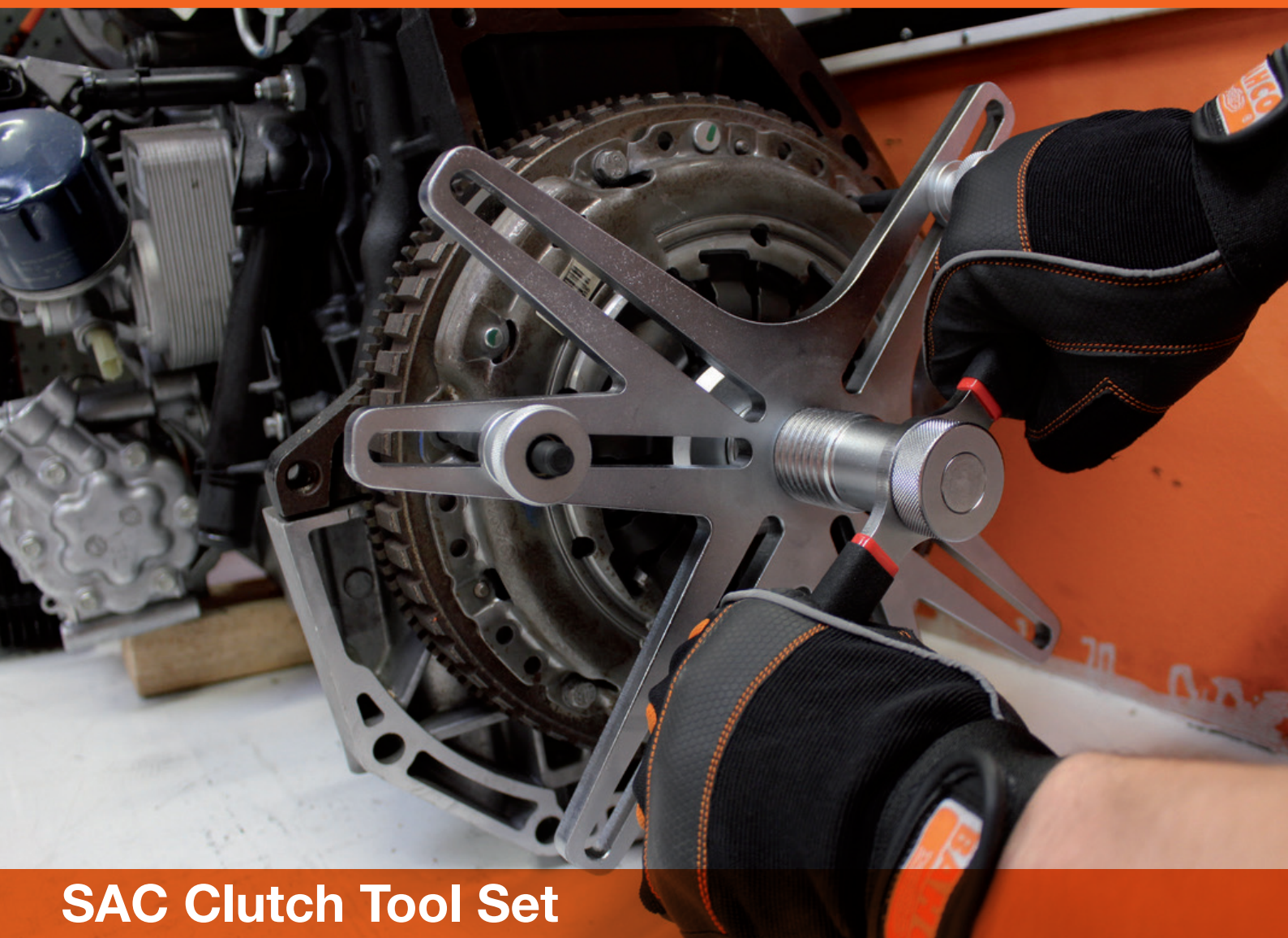


2



BE301

**BAHCO®**



**SAC Clutch Tool Set**

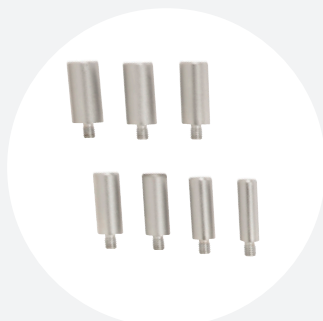




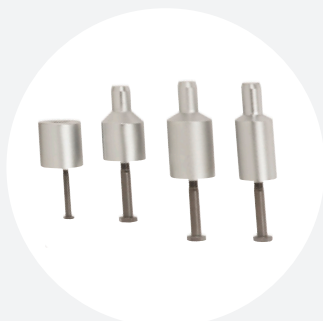
# BE301

## SAC CLUTCH TOOL SET

1. Allows the proper and precise centering when disassembling and assembling of Self-Adjusting Clutches (SAC)
2. Suitable for standard SAC, but also for non-SAC, for a wide range of vehicles
3. Includes 6 centering mandrels, especially designed for BMW clutches, where the clutch cover is assembled with a blocking device
4. This type of clamping frame is perfect for both 6 and 8 covers, having been designed with slots for 3 and 4 bolts application
5. Avoids damaging the pressure plate
6. The six arms clamping frame offers light weight and flexibility
7. Centering mandrels of following dimensions are included
  - 12, 14, 15, 16, 17, 18 & 19mm diameters for standard passenger and light commercial vehicles
  - 23, 26.5, 28, 32.5, 32.5 (for pilot bearing shaft) and 34 mm diameters for BMW vehicles
8. Resetting tool included in the set
9. High performance alloyed steel
10. Nickel and chrome plating finish
11. Operating instructions included
12. Supplied in a blow moulded case for a better tool control



7.



7.



BE60FW

**BAHCO®**



**Fuel / Oil Filters Removal Pliers**



# BE60FW

## FUEL / OIL FILTERS REMOVAL PLIERS

1. For removing oil and fuel filters
2. Features 90° swivel jaws especially designed to reach difficult access areas
3. Swivel jaws have three fixed positions
4. Filter diameter range. Ø57-120 mm
5. Jaws teeth ensures a perfect grip on the filter
6. Suitable to be used on the most updated vehicles
7. Essential tool for engines maintenance tasks, making the mechanic's life easier
8. Non slippery rubber grip



3.



5.



BE60F108

**BAHCO®**



**108 mm HDi Fuel Filter Wrench**



# BE60F108

## 108 MM HDI FUEL FILTER WRENCH

1. Especially designed wrench when working on fuel filters covers
2. Suitable for HDi engines mounted on Citroën, Peugeot and also some Renault vehicles
3. Half-moon shape for unbeatable comfort
4. Allows accurate installation torque
5. Prevents damaging the fuel filter housing
6. Essential tool for engine maintenance tasks
7. 108mm Diameter
8. 3/8" Drive
9. Made of aluminium



**1,2,3**



BE6FCP

**BAHCO®**



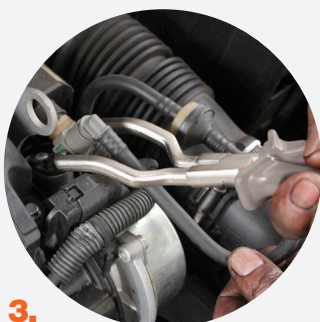
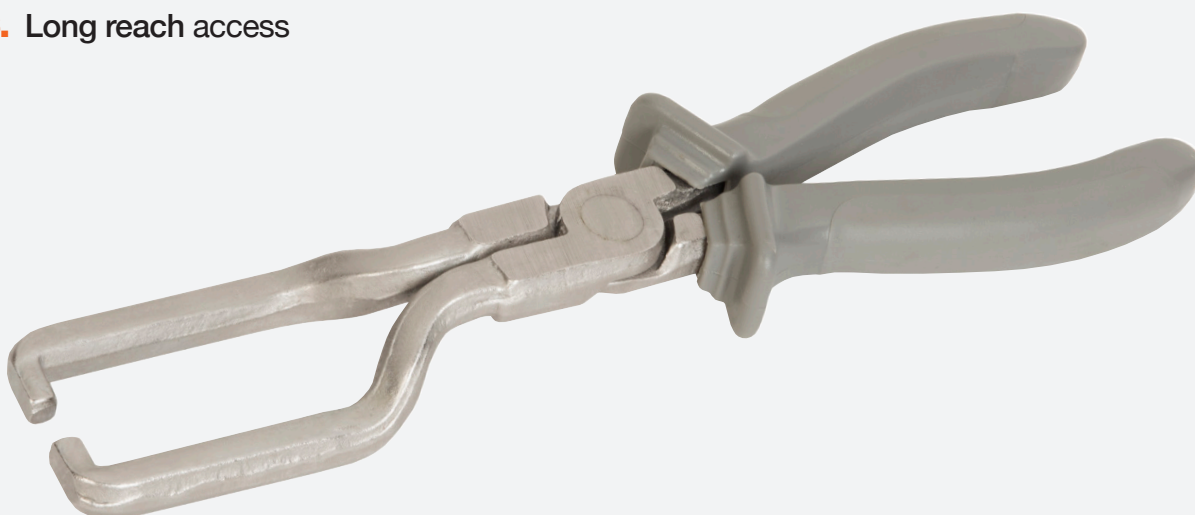
**Fuel line connector pliers**



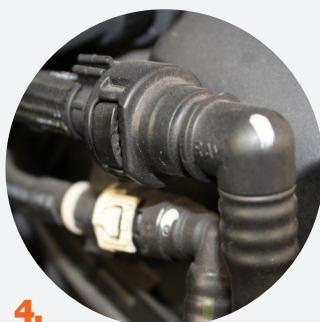


## FUEL LINE CONNECTOR PLIERS

1. For removal and replacement of the connections on the in-line fuel filter
2. Suitable for a wide range of engines
3. Special tip pliers can move forward (locked) and backwards (unlocked) these connectors
4. Tip design is suitable to be used on the most updated connections
5. Essential tool for petrol engines maintenance tasks
6. Long reach access



3.



4.

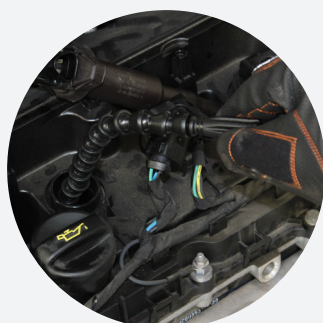
# BAHCO®



# BE1SP1F

## FLEXIBLE SPARK PLUG FITTER

- 1. Helps engaging spark plugs in difficult access areas
- 2. Spark plug foam retaining system
- 3. Suitable for the most common spark plugs diameter (16 mm – 5/8")
- 4. Length: 315 mm



1.



2.





BBR501011 and BBR50121314

**BAHCO®**

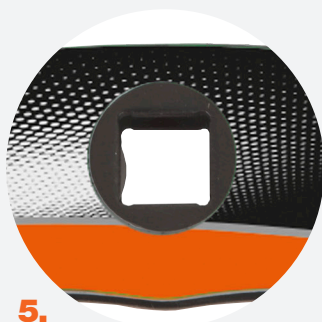
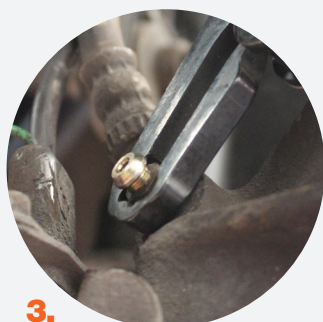


## Brake Bleeding Nipple Wrenches



## BRAKE BLEEDING NIPPLE WRENCHES

1. The more the brake bleeding nipple is tight, the tighter the tool will snug around the brake bleeding nipple.
2. “Last chance wrench”. If this tool doesn’t work, forget about the others!
3. Essential when loosening the bleeding nipple blocked by the corrosion, especially because of the salt on the road in winter time
4. Two sizes wrenches available:
  - BBR501011 – For 10 and 11 mm
  - BBR50121314 – For 12, 13 and 14 mm
5. 3/8” drive
6. Essential tool for brake maintenance
7. Heavy duty construction
8. Patented design
9. Sold individually





BBR405

**BAHCO®**



**Digital Brake Disc and Drum Caliper**





# BBR405

## DIGITAL BRAKE DISC AND DRUM CALIPER

1. Digital caliper for precisely measuring brake disk/drum diameter and thickness
2. Diameter measuring range covering standard cars, SUV's and light commercial vehicles: 0-300 mm
3. Special tips for precise measurement
4. Internal and external measurements thanks to the double tips
5. Accuracy:  $\pm 0,05$
6. Made of stainless steel
7. Possibility to choose between metric and imperial measurements
8. Auto-off feature after 7 minutes
9. LR44 battery included
10. Certified according to 2014/30/EU and 2011/65/EU
11. Supplied in a plastic box to protect the device



**1.**



**4.**



**5,7,8**